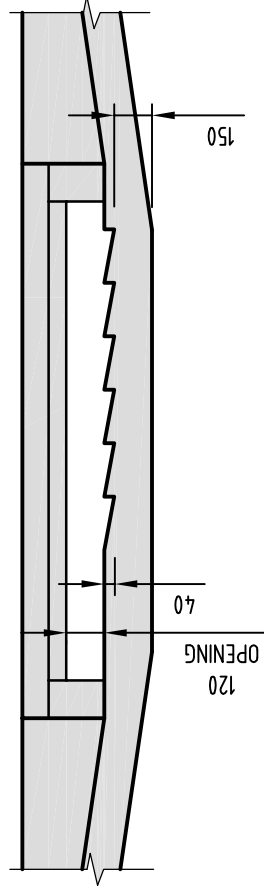


## SIDE ENTRY PIT DEFLECTORS

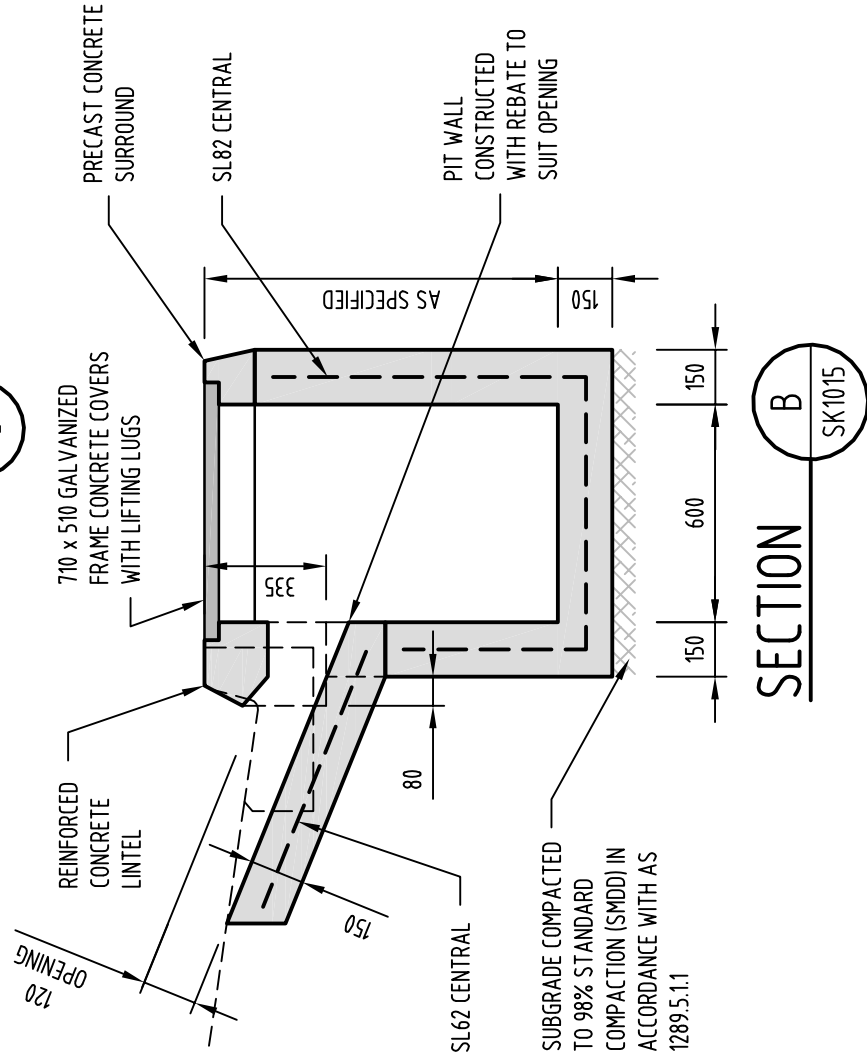
SCALE: N.T.S.

DEFLECTORS SHALL BE PROVIDED WHEN GUTTER APPROACH GRADE EXCEEDS 2.0%.

DEFLECTOR HEIGHT TO  
TRANSITION FROM 0mm  
AT EDGE OF BITUMEN TO  
40mm AT INLET



### SECTION A



### SECTION B

NOTE:

1. IN MARINE GROUNDWATER ENVIRONMENTS CONCRETE SHALL BE TO EXPOSURE CLASSIFICATION C IN ACCORDANCE WITH AS 3600 FOR DURABILITY AND CHARACTERISTIC STRENGTH SHALL BE 50MPa WITH 30% FLYASH MIX.

## STANDARD DETAIL DOUBLE SIDE ENTRY PIT (SHEET 2 OF 2)



CITY OF  
Port Adelaide Enfield

File Name

SK1016

Revised 29 MAR 2016

Approved A.WOOD

Revision B